

NABRICO PRODUCTS

www.nabrico-marine.com

CONTENTS

Winches

Manual.....	2-3
Parker.....	4
Low Profile.....	4
2 and 5 Ton.....	5
Specialty.....	5
Power.....	6-7
Positioning.....	8-9
Anchor.....	10-11

Capstans

Electric.....	12
Hydraulic.....	13

Hatches.....	14-15
Doors & Enclosures.....	16-17
Castings.....	18-19
Accessories.....	20-21
Cranes & Steel Processing.....	22-23
Warranty.....	24

PRODUCT NOTICES

Proprietary Information. The information and sketches shown in this catalog are proprietary to Nabrico. Duplication, reproduction or manufacture from data contained herein is strictly prohibited.

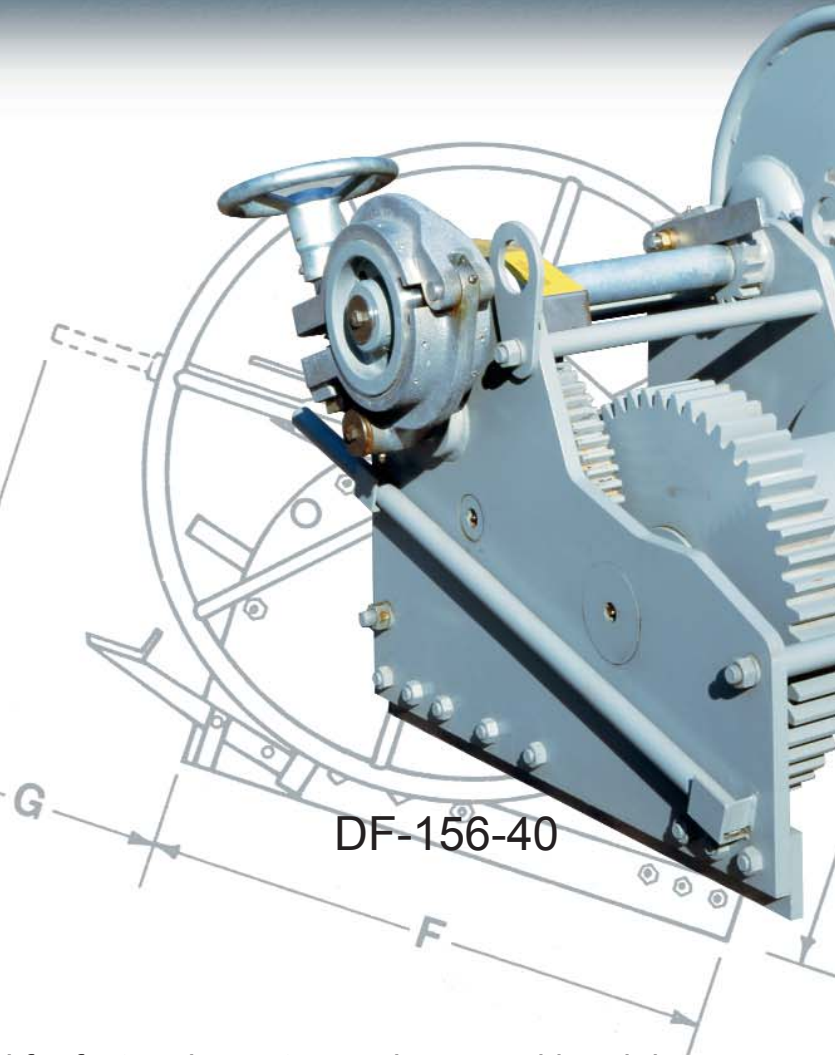
Usage Warnings. All Nabrico Products must be correctly sized, properly located and to serve their intended functions and it is the responsibility of Buyer or End User to insure such action is taken. Please note and consider the following warnings: Improper installation can result in failure of a Nabrico Product. Nabrico Products that have failed because of overloads, or which have been dislodged from foundations, or have fractures and/or deformations should be repaired or replaced immediately. Loads to bitts must be applied to the posts between the base and the midpoint in a horizontal or downward direction. Properly placed chocks will prevent line chafing. Kevels should be installed horizontally on foundation bases of sufficient size, and forces to kevels must be direct to the trunk and not the horns. Horns will fail when exposed to direct loads. And, Nabrico Products are not designed for use to lift a vessel.

Dimensions. All dimensions shown in this catalog are in feet and inches. Weights are in English pounds. Capacities are in short tons of 2,000 pounds. Please note that dimensions and weights are nominal and are subject to standard variations. Maximum test pressure on hatches, doors and enclosures is 2 PSI unless advise in writing by Nabrico of a higher allowance. Product details and specifications are subject to change without notice.

NABRICO



DF-156-10



DF-156-40

NABRICO provides the extra hands you need for fast and sure tow make-up and breakdown with a complete line of hand winches in both right and left hand models. Available in 10, 20, 40 and 60 ton holding capacities, there is a **NABRICO** hand winch to meet the particular needs of your job or installation.

Match a **NABRICO** hand winch to your needs and available space and you're ready to go to work. For installation purposes, all dimensions should be verified.

MANUAL WINCHES



DF-156-60

Features

- All steel construction.
- Machine cut gears and stainless steel ratchets.
- Bronze bushed bearings.
- Alemite fittings for proper lubrication.
- True right and left hand models for use in pairs.
- Positive no-slip tension.
- Fast cranking with handle.
- Quick release cam action.
- Full load rated hand brake with Stainless Steel braking surface.
- Corrosion-resistant hardware.
- Lever ratchet for extra high tension.
- Blasted and painted, galvanized and other coatings available.

MODEL	MOUNT	DOG HOLDING (1)	LINE PULL (1)		GEAR RATIO	DRUM FLANGE DIAM.	DRUM		DRUM CAPACITIES (FT.)								WEIGHT (LBS.)	OVERALL DIMENSIONS			
			HANDWHEEL ONE MAN	RACHET W/ STANDARD EXTENSION ONE MAN			DIAM	WIDTH (2)	CABLE SIZE									WIDTH	WIDTH	WIDTH	
6		S.T.	LB.	LB.		IN.	IN.	IN.	7/16	1/2	5/8	3/4	7/8	1	1-1/8	1-1/4	1-1/2				
10-6-M	Right/Left	10	5,200	7,000	5.57:1	18	8.625	6.0	353	317	174	129						500	1'77/16"	3'43/4"	4'4"
20-7-M	Right/Left	20	14,000	14,400	18.57:1	16	10.75	7.25	270	186	109	57	39	21				850	2'01/4"	3'35/16"	5'7"
40-11-M	Right/Left	40	14,000	17,800	18.57:1	19	12.75	11.25			287	176	130	84	36	26		1250	2'51/40"	3'6"	6'9"
40-18-M	Right/Left	40	14,000	17,800	18.57:1	19	12.75	18.125			463	279	151	139	58	51		1350	3'01/4"	3'6"	6'9"
60-11-M	Right/Left	60	24,000	28,800	27.0:1	24	14.00	10.625			572	325	262	200	119	111	62	2100	2'87/8"	4'2"	6'8"

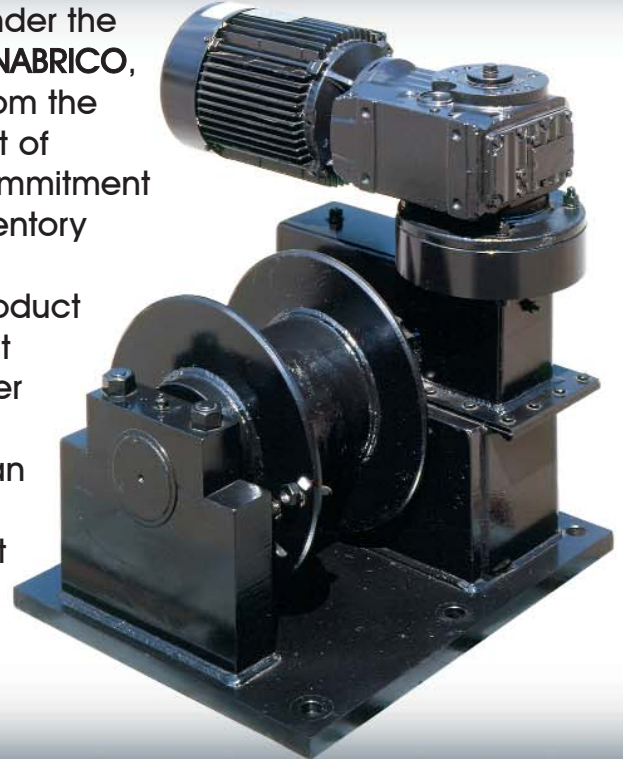
NABRICO



Parker Towing Winches have been in the marine market place for more than forty-five years. Still to be marketed under the Parker name but owned by NABRICO,

they will benefit from the added support of NABRICO's commitment to quality, inventory maintenance, continuing product improvement and customer service.

We now offer an electric model and have made it possible for all manual units to be retrofitted.



MODEL	BASE DIMENSION	WEIGHT	CAPACITY OF DRUM	RATING	GEAR RATIO
LR-100	16"X24"	800 lbs.	30' of 1" rope	10 tons	20 to 1
LL-100	16"X24"	800 lbs.	30' of 1" rope	10 tons	20 to 1
LR-250	20"X24"	850 lbs.	65' of 1" rope	25 tons	30 to 1
LL-250	20"X24"	850 lbs.	65' of 1" rope	25 tons	30 to 1

LOW PROFILE

NABRICO offers a variety of Low Profile Winches where space is critical. Models available to weld down or pivot. 40 ton holding capacity. Additional models are available. Inquire for details.



MODEL	MOUNT	HOLDING BRAKE OR DOG	LINE PULL @ First Layer of Cable HAND WHEEL		DRUM FLANGE DIAM.	DRUM		DRUM CAPACITIE (F.T.)			
			ONE MAN	RACHET HANDLE W/ EXTENSION		DIAM	WIDTH	CABLE SIZE			
								S. TONS	LBS.	LBS.	IN.
DF-525 40-6C	Right or Left	40	2,000	4,800	19.75	8.625	6.0	188	132	95	74
DF-526 40-6B	Right or Left	40	2,000	4,800	19.75	8.625	6.0	188	132	95	74

Product details and specifications are subject to change without notice.

WINCHES

2 and 5 Ton Hand*



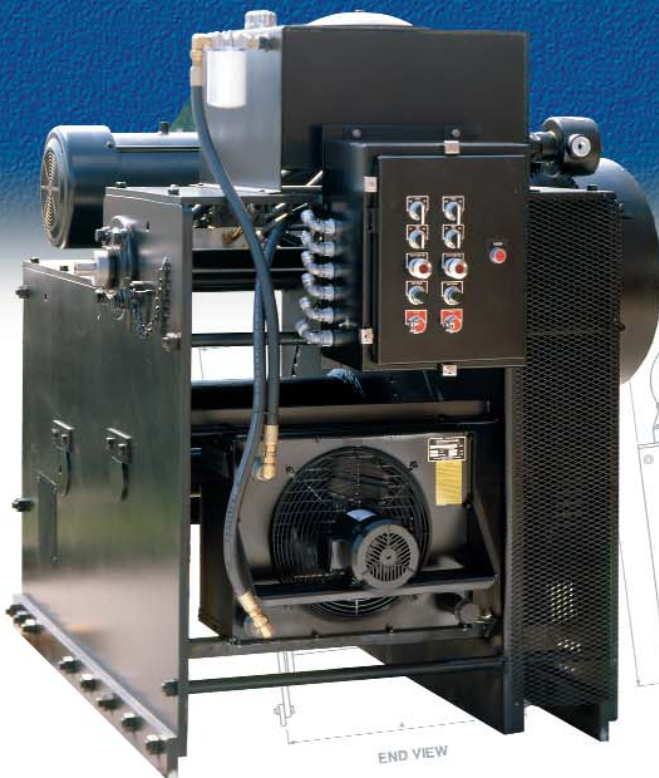
MODEL	LINE PULL		SHOCK LOAD	HAND BRAKE
	SLOW SPEED	FAST SPEED		
2 Ton	4025	3500	3800 (3 foot drop)	6000
5 Ton	10,000	8500	8250 (3 foot drop)	14000

ALL ABOVE NUMBERS ARE POUNDS

CABLE CAPACITY (FULL DRUM)							
	DRUM WIDTH	1/4	5/16	3/8	7/16	1/2	WEIGHT
2 Ton	6"	275	200	105	100	60	65
5 Ton	6"			300	100	170	116

*Available with solid handwheel or handle, see cover.

Specialty

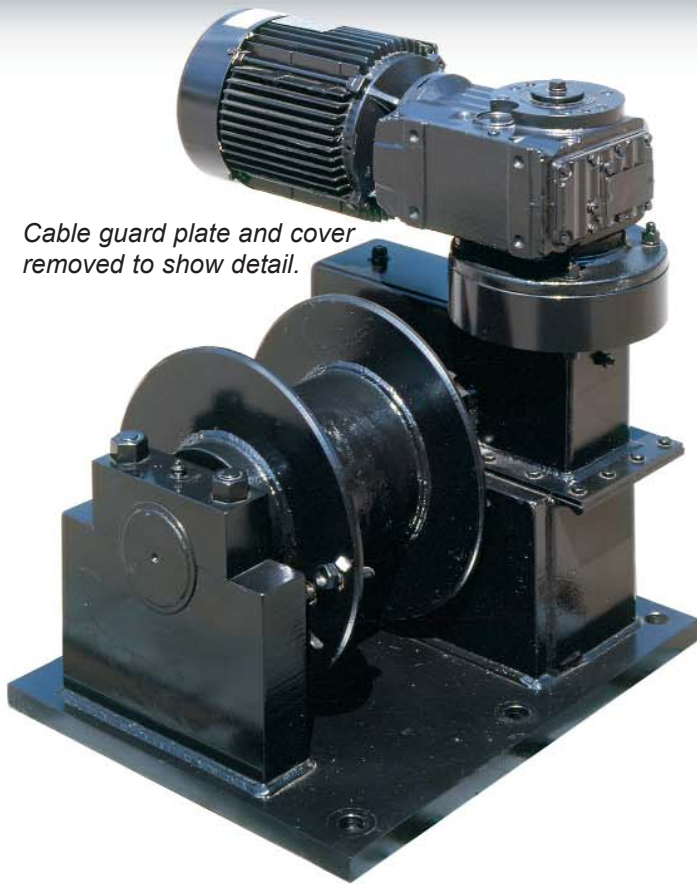


NABRICO manufactures custom winches to meet your specific needs. Contact us regarding your requirements for:

- Rail
- Mining
- Oil Field
- Off - Shore
- Agriculture

For additional information, drawings and specifications contact NABRICO.

POWER WINCHES



Cable guard plate and cover removed to show detail.



40 TON ELECTRIC

25 TON PARKER ELECTRIC

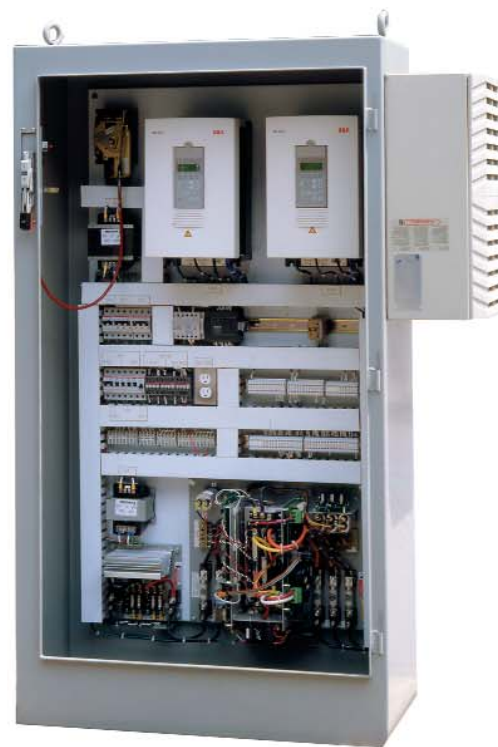
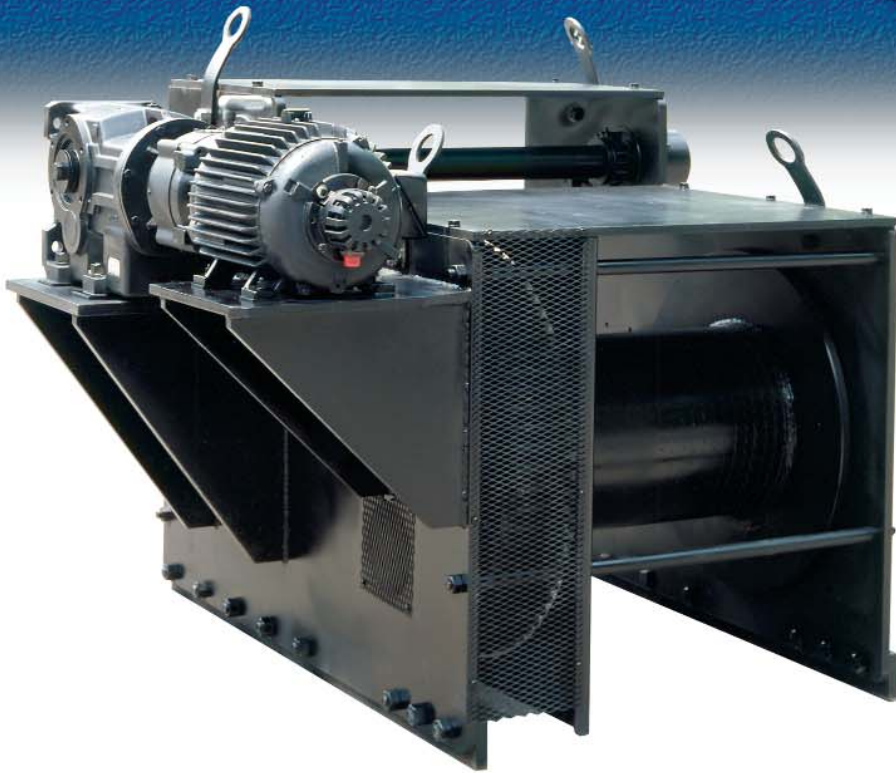
Features

- Totally enclosed crane and hoist electric motor with high efficiency gear box attached.
- Free-wheeling feature to allow faster cable pullout.*
- Cable guard prevents cable damage from gears.
- Quiet operation.
- Provisions for emergency manual operation from three locations. One location utilizes the entire winch gear reduction.*
- Mechanical locking dog for emergency use in case of motor brake failure.*
- Minimal maintenance.

*Not on Parker Winch

MODEL	MOUNT	HOLDING BRAKE & OR DOG (1)	LINE PULL @ FIRST LAYER OF CABLE				LINESPEED @ FIRST LAYER OF 1 IN. CABLE NO LOAD	DRUM FLANGE DIAM.	DRUM		DRUM CAPACITIES (FT.)					MOTOR HP	WEIGHT LBS.	MOUNTING DIMENSIONS		
			@ RATED AMPS	@ MOTOR STALL	HAND CRANK @ MOTOR SHAFT	HAND CRANK @ TOP SHAFT			DIAM	WIDTH (2)	1/2	5/8	3/4	7/8	1			WIDTH	LENGTH	HEIGHT
DF-500		S.Tons	LBS.	LBS.	LBS.	LBS.	FPM	IN.	IN.	IN.	1/2	5/8	3/4	7/8	1	HP	LBS.			
60-11-14	Universal	60	14,000	24,000	15,000	2,500	15.3	19	12.75	11.25		260	180	130	100	10	1,900	1' 9"	3' 8"	3' 5 1/4"
40-11-14	Universal	40	14,000	24,000	15,000	2,500	15.3	19	12.75	11.25		260	180	130	100	5.4	1,900	1' 9"	3' 8"	3' 5 1/4"
30-7-15	Universal	30	13,000	24,000	22,000	4,000	16.0	16	10.75	7.25	186	109	57	39		5.4	1,600	1' 33/8"	2' 1 1/2"	4' 4 1/4"
25-10	Right or Left	25	5,800	7,600	NA	5,000	25.0	14.75	8.0	10.25	230	195	125	90	65	5.4	1,400	2' 4"	2' 1 1/2"	2' 5"

NABRICO



NABRICO's most technologically advanced, backed by a tradition of recognizing and meeting the needs of the towing and transportation industries, provides an infinite number of line pulls and line speeds. Our standard model has a starting line pull of 24,000 lbs. with 16,000 lbs. continuous at 30 fpm. Drum capacity is generous, varying from 630 to 1047 feet, depending on the size of the cable. Accessible, clearly marked controls allow for remote or local operation. Wireless operators as an option.

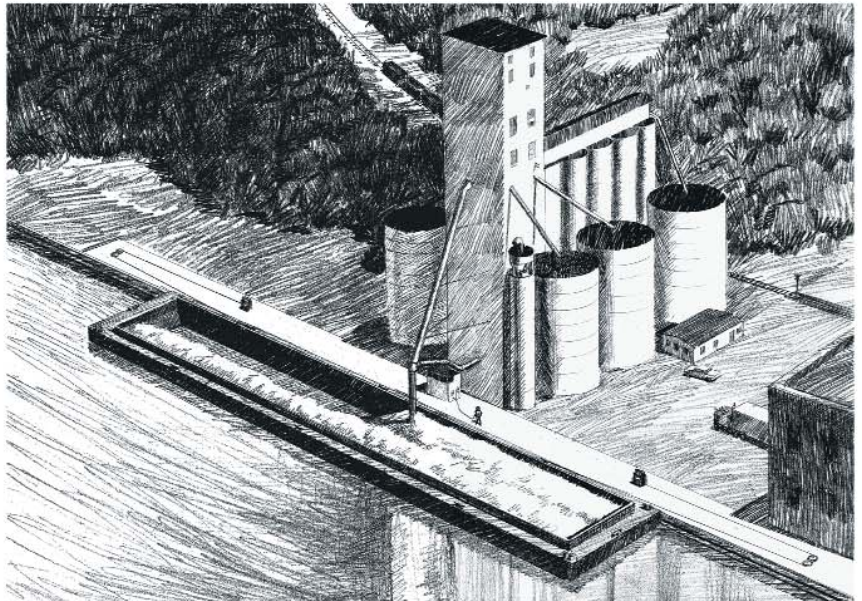
CABLE CAPACITY		LINE SPEED	LINE PULL
CABLE SIZE	DRUM CAPACITY		
1"	630' @ 4 layers 824' @ 5 layers	Standard: Infinitely variable from 0-30 fpm.	Standard: Infinitely variable line pull to 48,000 lbs. at motor stall; 24,000 lbs. starting and 16,000 lbs. continuous.
7/8"	695' @ 4 layers 904' @ 5 layers	Custom application up to 50 fpm.	
3/4"	808' @ 4 layers 1047' @ 5 layers		Custom applications are available.

Note: These figures are based on uniform rope winding. The amount of tension applied when spooling the rope will also affect the length.

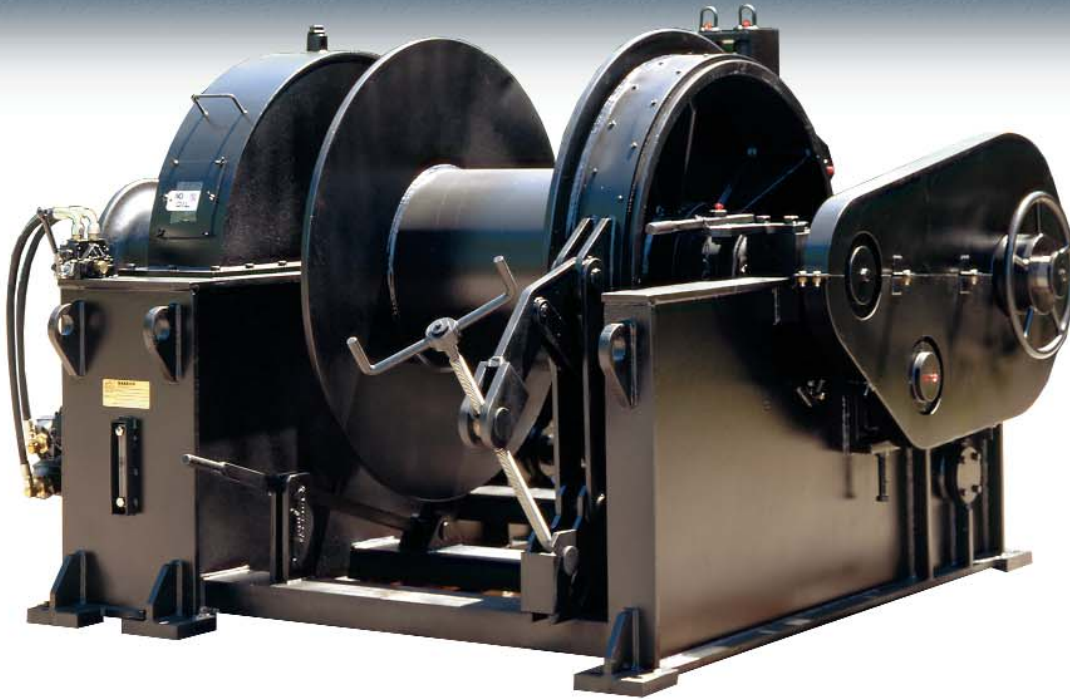
POSITIONING WINCH

NABRICO's constant tension, all electric positioning winch system consists of two winches, two vector drives, vector motors, helical bevel gearboxes, failsafe brakes, PLC (programmable logic controls) and a solid state regen unit. These components have been engineered to allow one winch to be in a drive mode, pulling, while the other winch is in a torque mode, holding. When the object being positioned is at rest, both drives are in the torque mode, and the load holds its position on the dock, letting out cable during loading, and taking in cable during unloading. This also allows cable in and out as required during tide movement. The amount of torque/pull and speed on the cable is controlled by two potentiometers mounted on the control panel. The positioning winch system is capable of maintaining the full horsepower load at zero speed for extended periods of time. If there should be a loss of power or the emergency stop is pressed, the failsafe brakes hold the load.

NABRICO has utilized proven winch designs with the latest drive and touch screen technology. Adjustable ramps have been programmed into the system to minimize the shock on the cable and associated hardware that is a result of starting and stopping.



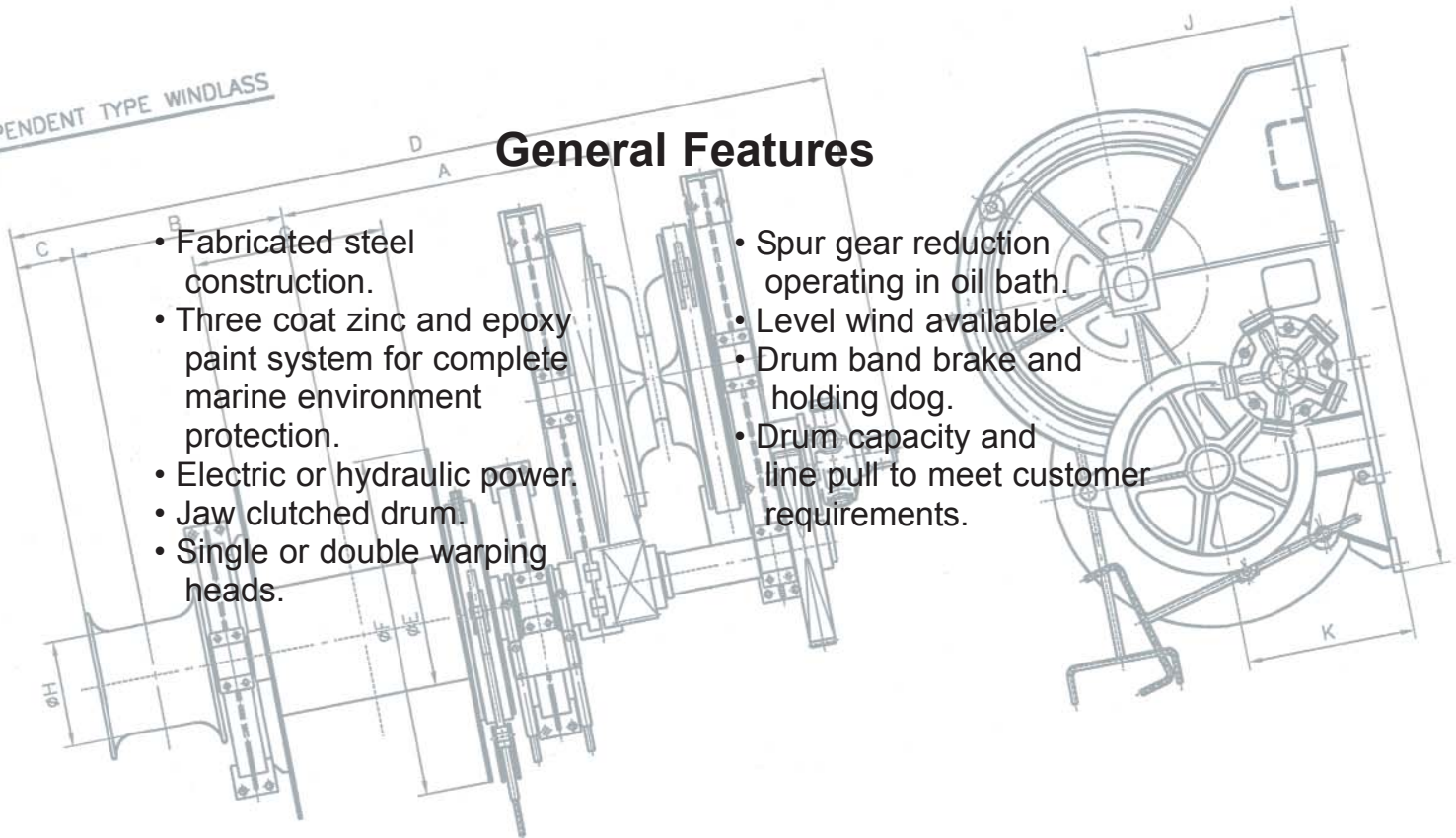
NABRICO pioneered the positioning winch system employing the most recent available technology. In addition to the standard model, the system is available in a larger, 50 horsepower model, and in a smaller 10 horsepower model. Using various motor and gearbox combinations, the line pull and speed can be changed, since the basic engineering in the panel and winch remain the same. The positioning winch has industrial, marine and rail applications.



INDEPENDENT TYPE WINDLASS

General Features

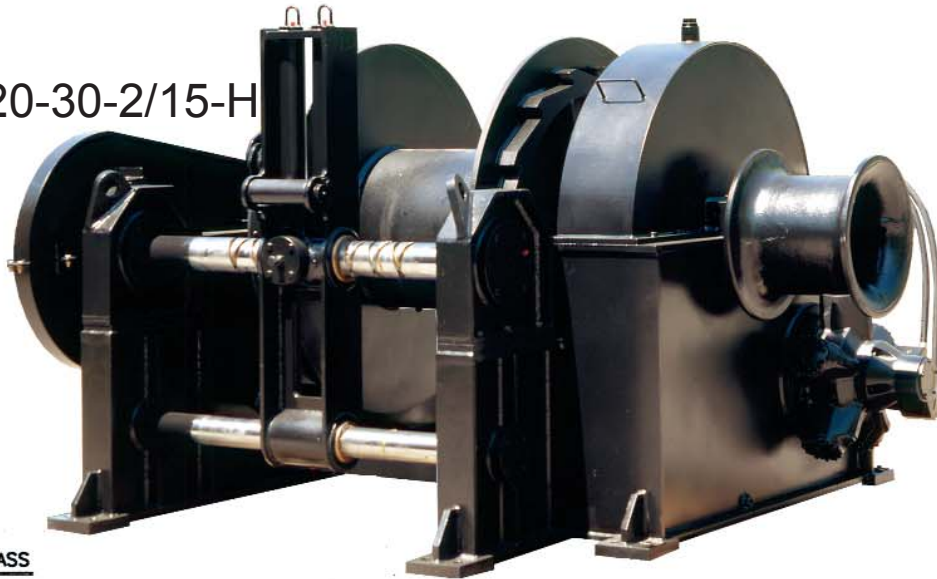
- Fabricated steel construction.
- Three coat zinc and epoxy paint system for complete marine environment protection.
- Electric or hydraulic power.
- Jaw clutched drum.
- Single or double warping heads.
- Spur gear reduction operating in oil bath.
- Level wind available.
- Drum band brake and holding dog.
- Drum capacity and line pull to meet customer requirements.



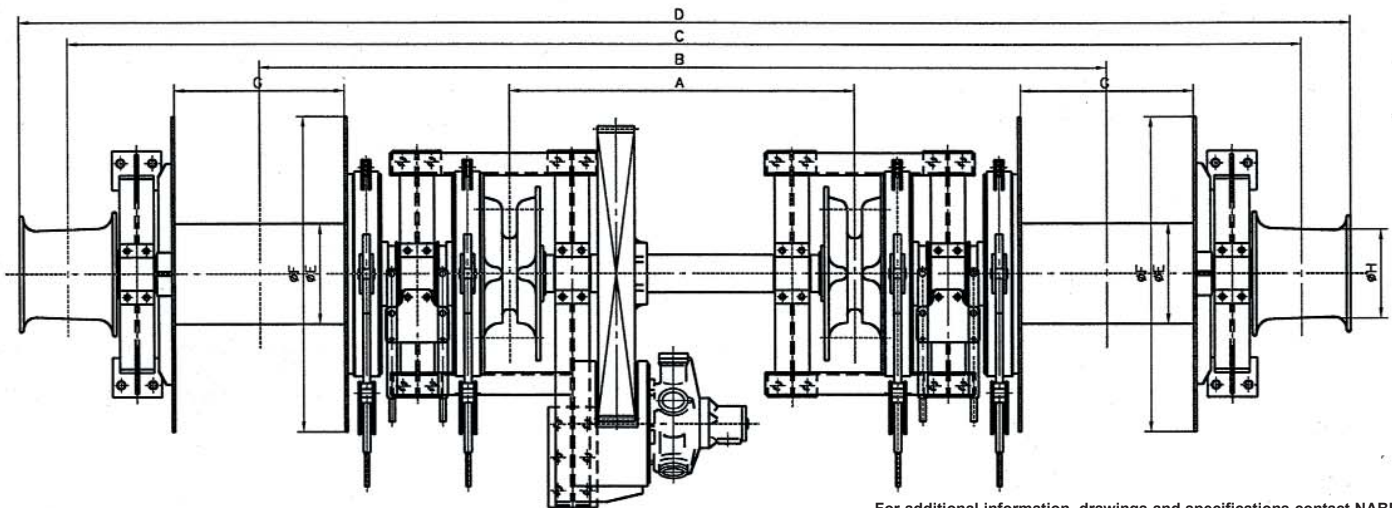
ANCHOR WINCHES* & WINDLASSES

- Drum to spool 1200' of 1 3/4 inch diameter wire rope.
- Two 15 inch diameter steel gypsy heads.
- Hydraulic motor with fail safe motor brake.
- 4-way control valve mounted and piped on the winch.
- Manually operated band brake with stainless steel brake and steel hand wheel.
- Lever operated machined jaw clutch.
- Wire rope level wind for uniform lay of wire on the drum.
- Ratchet and pawl type holding dog on the drum.
- Rated to lift a 5020 lbs. anchor from 30 fathoms at 30 fpm.
- Rated line pull 20,000 lbs.
- Other sizes and features available.
- Other available offshore deck machinery; mooring winches, towing winches, anchors, chain and capstans. Contact NABRICO with your specific requirements.

DF-AW-1000-20-30-2/15-H



ORDINARY TYPE WINDLASS



For additional information, drawings and specifications contact NABRICO.

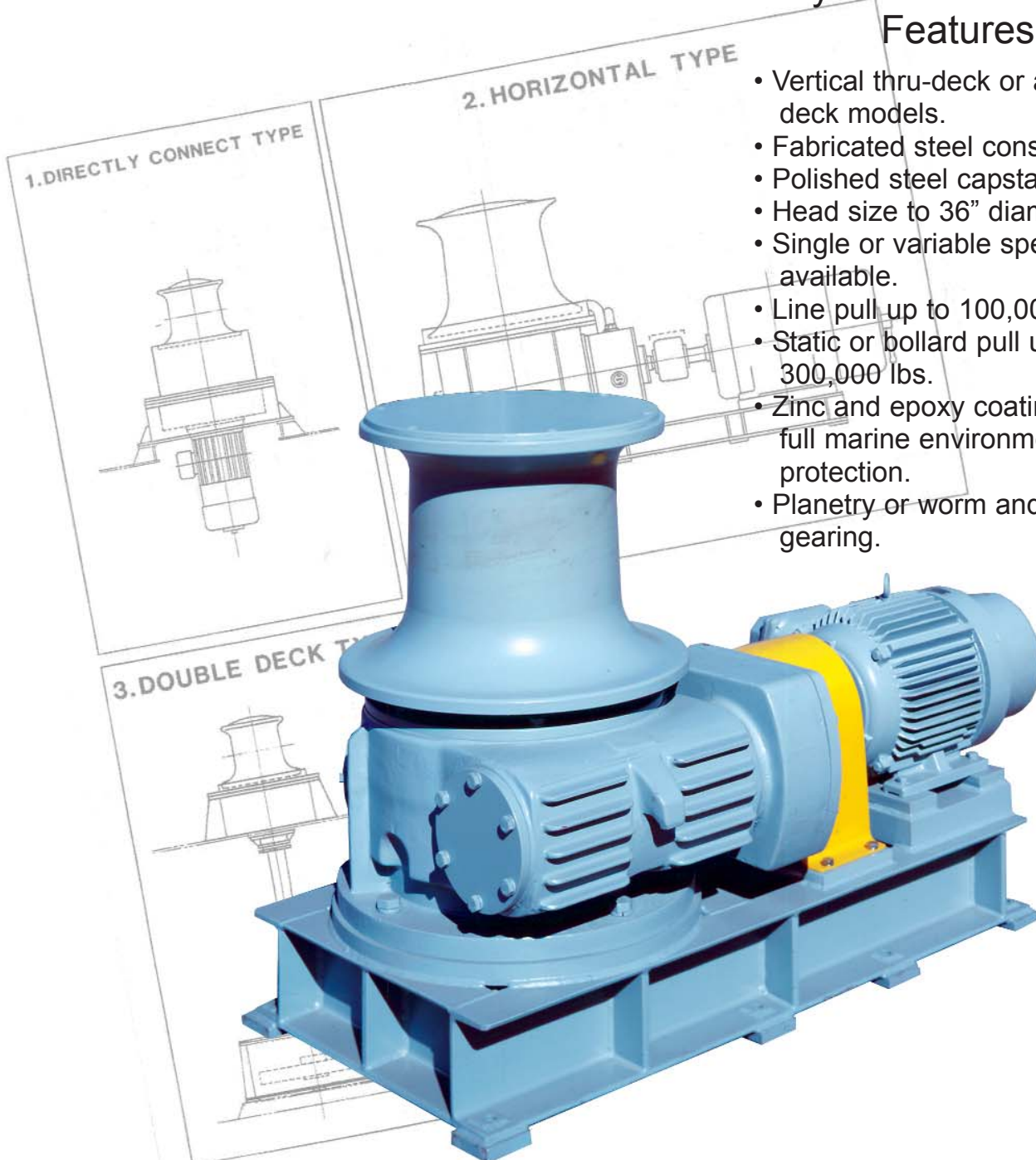
NABRICO



ELECTRIC

Hydraulic or Electric Features

- Vertical thru-deck or above deck models.
- Fabricated steel construction.
- Polished steel capstan head.
- Head size to 36" diameter.
- Single or variable speeds available.
- Line pull up to 100,000 lbs.
- Static or bollard pull up 300,000 lbs.
- Zinc and epoxy coatings for full marine environment protection.
- Planetary or worm and spur gearing.



CAPSTANS

HYDRAULIC

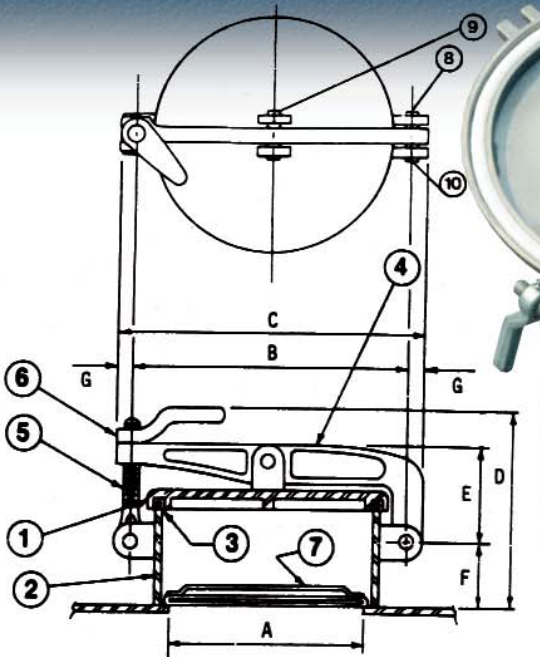


DF-C-16-12.5-30-H

- 16" diameter polished steel head.
- Rated line pull 12,500 lbs. at 30 fpm.
- Designed for above deck mounting.
- Other sizes and features available.

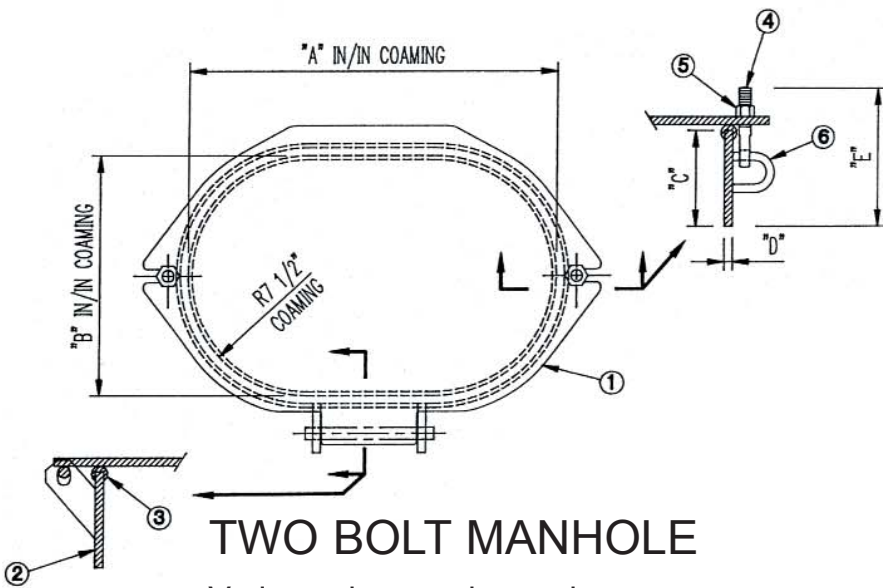


NABRICO



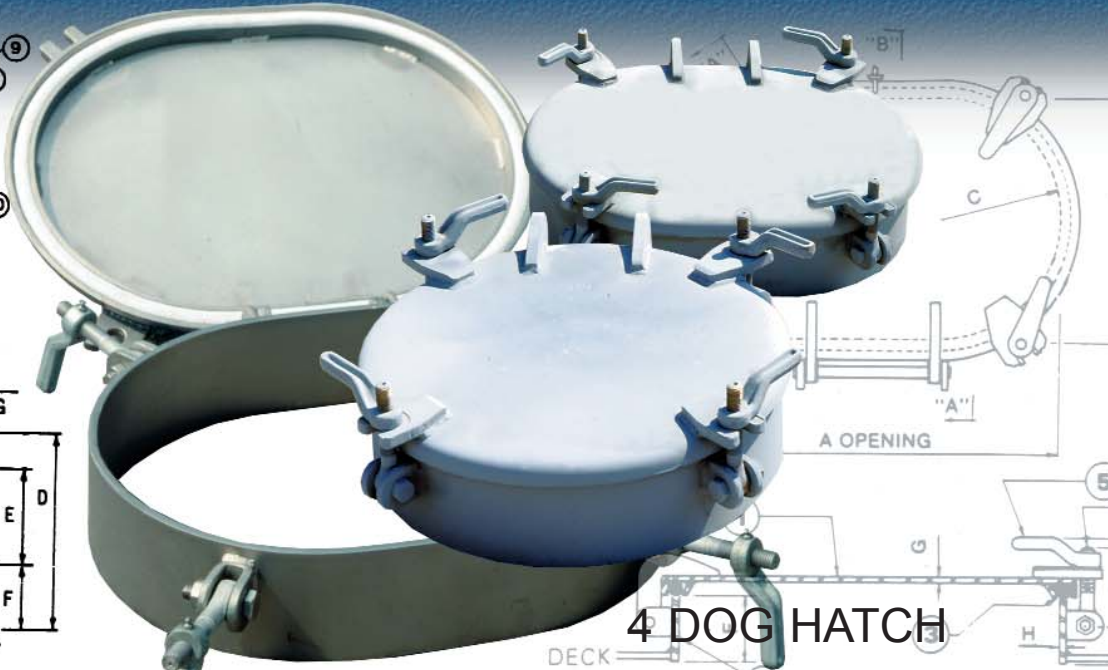
SMALL HATCH (ULLAGE)

- Sizes: 6", 8" and 10" diameter.
- Available in Stainless Steel or Carbon Steel.
- Various coaming heights.



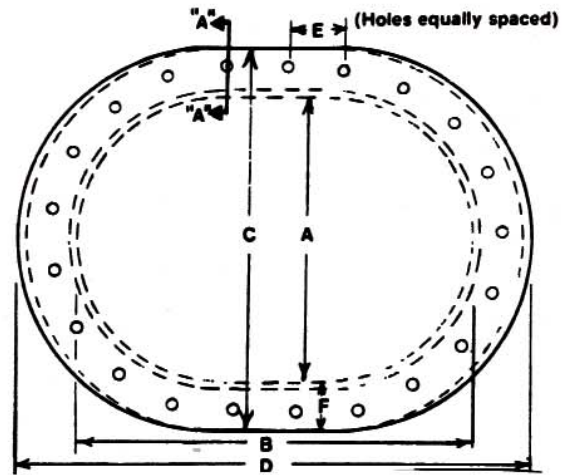
TWO BOLT MANHOLE

- Various sizes and coaming heights available.



4 DOG HATCH

- Oval or round configurations. "A-A"
- Available in Blast/Paint, Carbon Steel and Stainless Steel.
- Varied coaming heights.



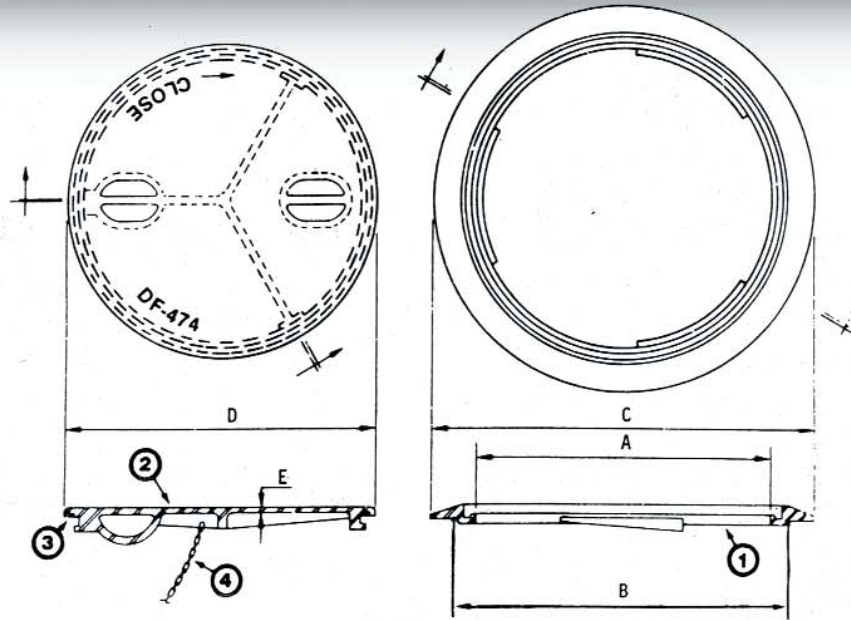
MULTI BOLT HATCH

- Oval or round configurations available.
- Varied coaming heights.
- Material fastener and gasket options.

Maximum test pressure: 2psi

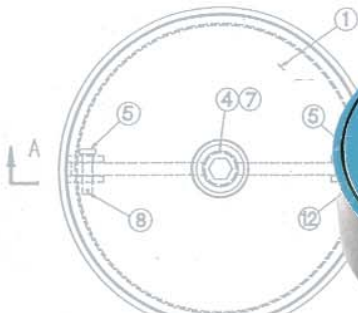
Product details and specifications are subject to change without notice.

HATCHES

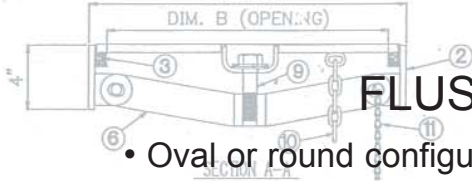


TWIST LOCK HATCH

- 18" Diameter.
- Coaming Available.

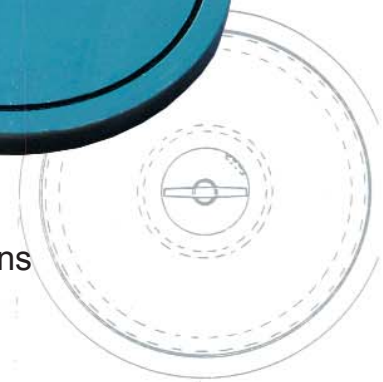


SINGLE BOLT HATCH



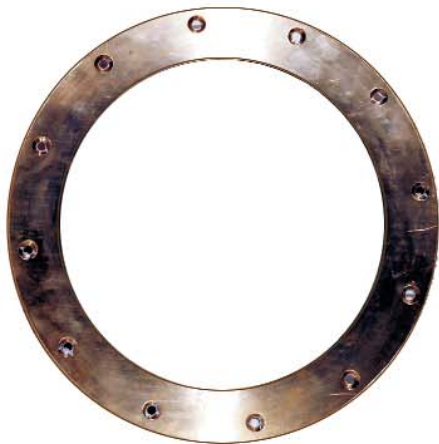
FLUSH HATCH

- Oval or round configurations.
- Available in Carbon Steel and Stainless Steel.
- Additional models are available and specifications will be furnished upon request.



Maximum test pressure: 2psi

NABRICO



PORT LIGHT

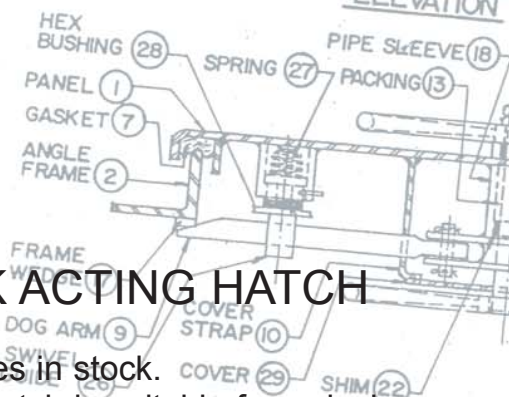
- Many varieties available.
- Material - Steel, Stainless Steel and Aluminum available.



Product details and specifications are subject to change without notice.

QUICK ACTING DOOR

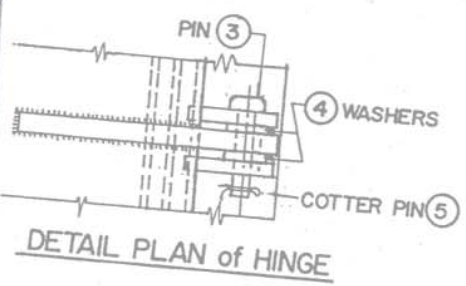
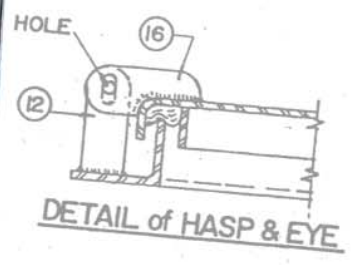
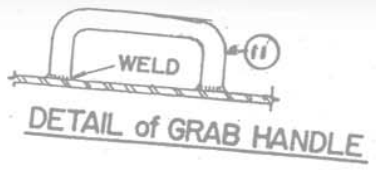
- Common sizes in stock.
- Doors are suitable for a design head of 28'.
- This product/model is covered under ABS (PDA) Certificate #01-HS211271A-PDA, dated 21/Mar/2001.



QUICK ACTING HATCH

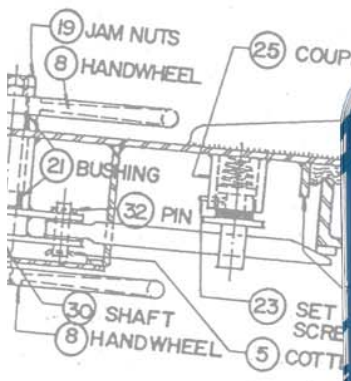
- Common sizes in stock.
- 24X24X24" hatch is suitable for a design head of 16.9'; 30x30x24" hatch is suitable for design head of 16.6'.
- This product/model is covered under ABS (PDA) Certificate #01-HS211271B-PDA, dated 21/March/2001.

DOORS & ENCLOSURES



6 DOG DOOR

- Common sizes in stock.
- Doors are suitable for a design head of 28'.
- This product/model is covered under ABS (PDA) Certificate #01-HS195940-PDA, dated 09/Jan/2001.

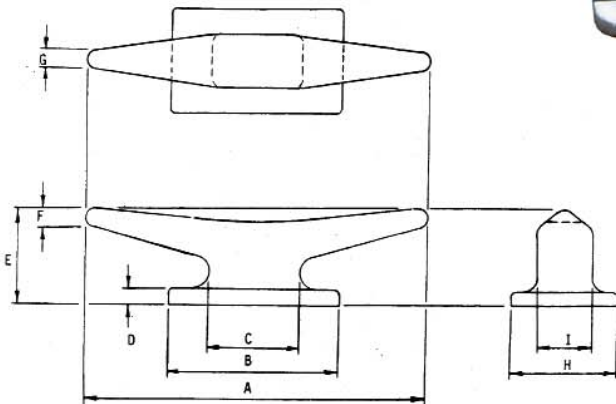


NABRICO



Nabrigo Cast Steel Kevel Chock

Sizes: 24", 36", 42" and 48"



Nabrigo Cast Steel Kevel

Sizes: 18" and 24"



Nabrigo Steel Button Chock

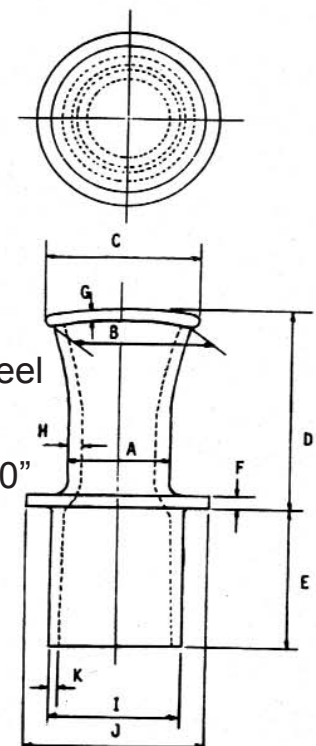
Sizes: 6", 8" and 10"



Nabrigo Cast Steel

Double Bitt

Sizes: 8", 10", 12" and 14"



Nabrigo Cast Steel

Single Bitt

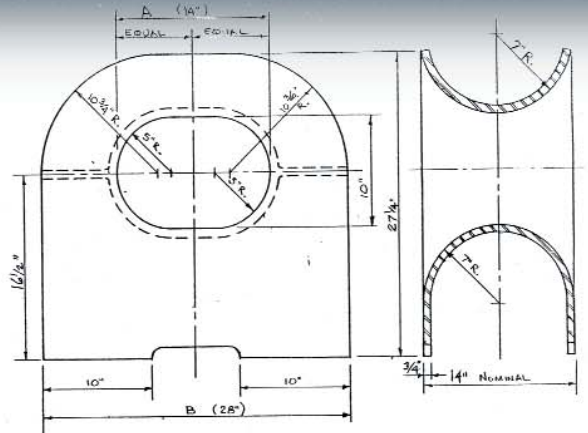
Sizes: 8" and 10"

NABRICO will produce custom castings in a variety of materials and employing different methods to meet your specific needs. Contact us with your requirements.

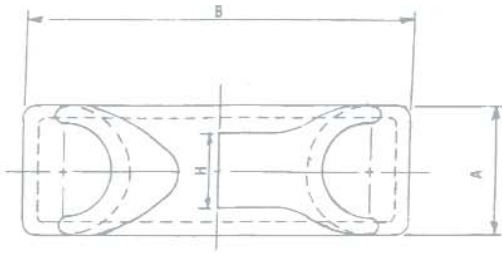
CASTINGS



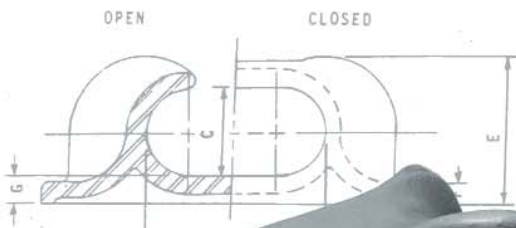
**Nabrico Cast Steel
Roller Button Chock**
Sizes: 12" and 16"



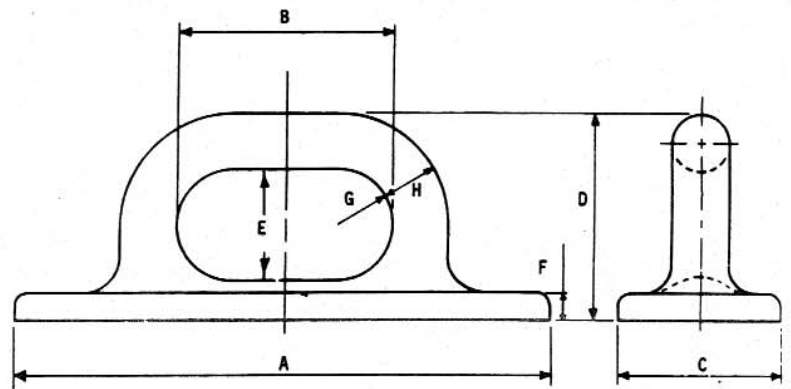
Nabrico Panama Canal Chock



Nabrico Ratchet Strap



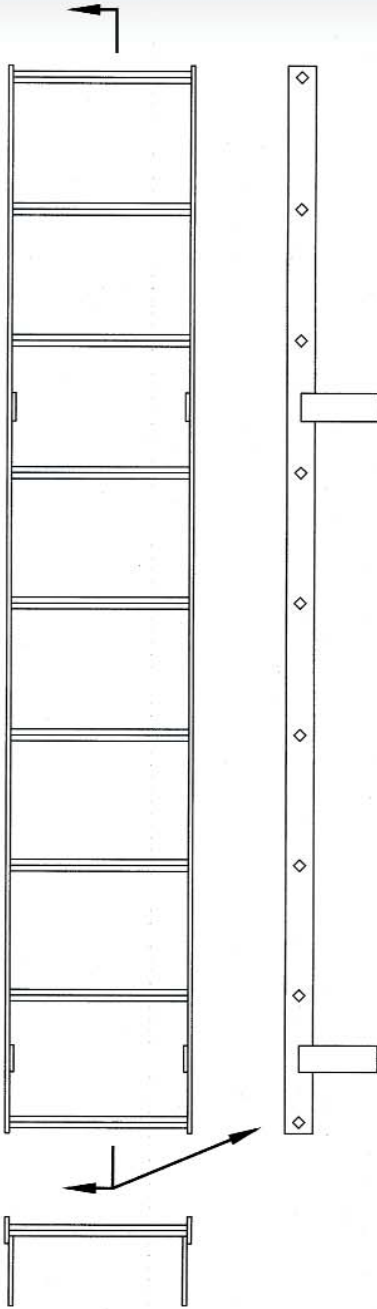
Nabrico Cast Steel Chock
Sizes: 6" to 12"



Nabrico Cast Steel D-Ring

NABRICO will produce custom castings in a variety of materials and employing different methods to meet your specific needs. Contact us with your requirements.

NABRICO



LADDERS

- Stainless steel and steel.
- Various lengths and widths.



INTERLOCKING PIN

- Helps maintain tow alignment
- Reduces barge connection shock



EXPANSION TRUNK

- Various sizes available.
- Stainless steel options for trunk/hatch/ullages and fasteners.
- Custom coatings available.



ACCESSORIES



Nabrico steel suction
Bellmouth
Sizes: 6", 8" and 10"

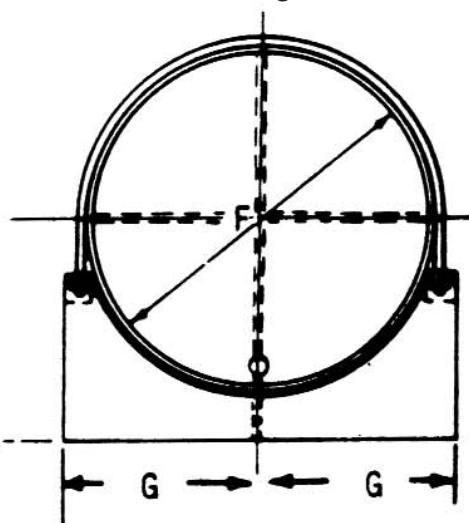


FLAG POLE SIGN

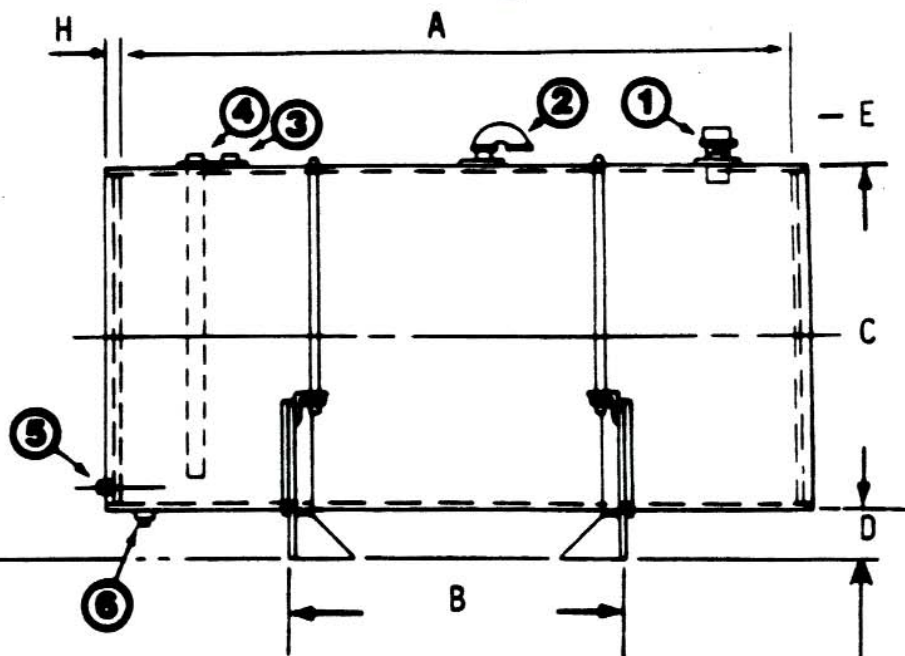
- Light holder.
- Warning sign.
- Loading/unloading flag.
- Document holder available.

FUEL TANK

- Fuel tanks are available in sizes from 300 to 15,000 gallons.

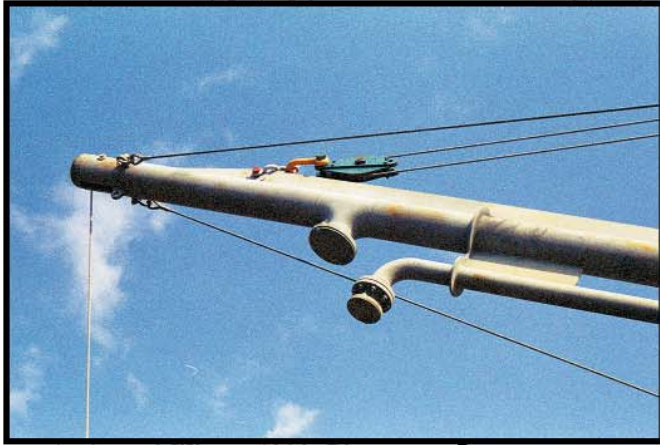
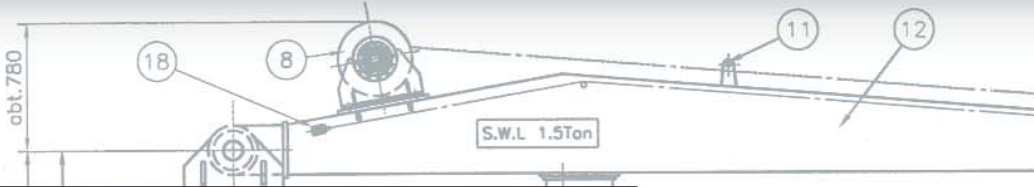


END ELEVATION

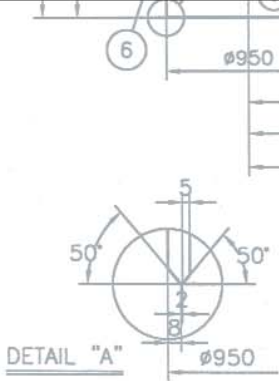
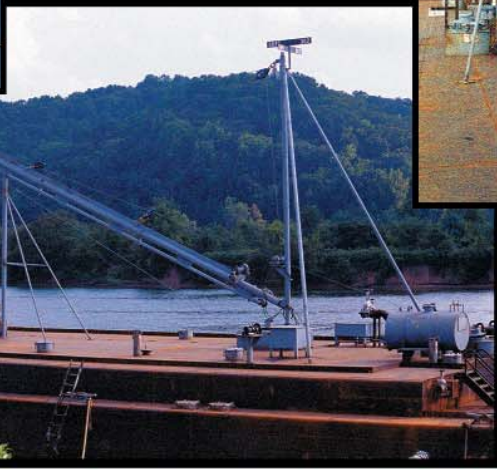


SIDE ELEVATION

NABRICO



max. LIFT 25M

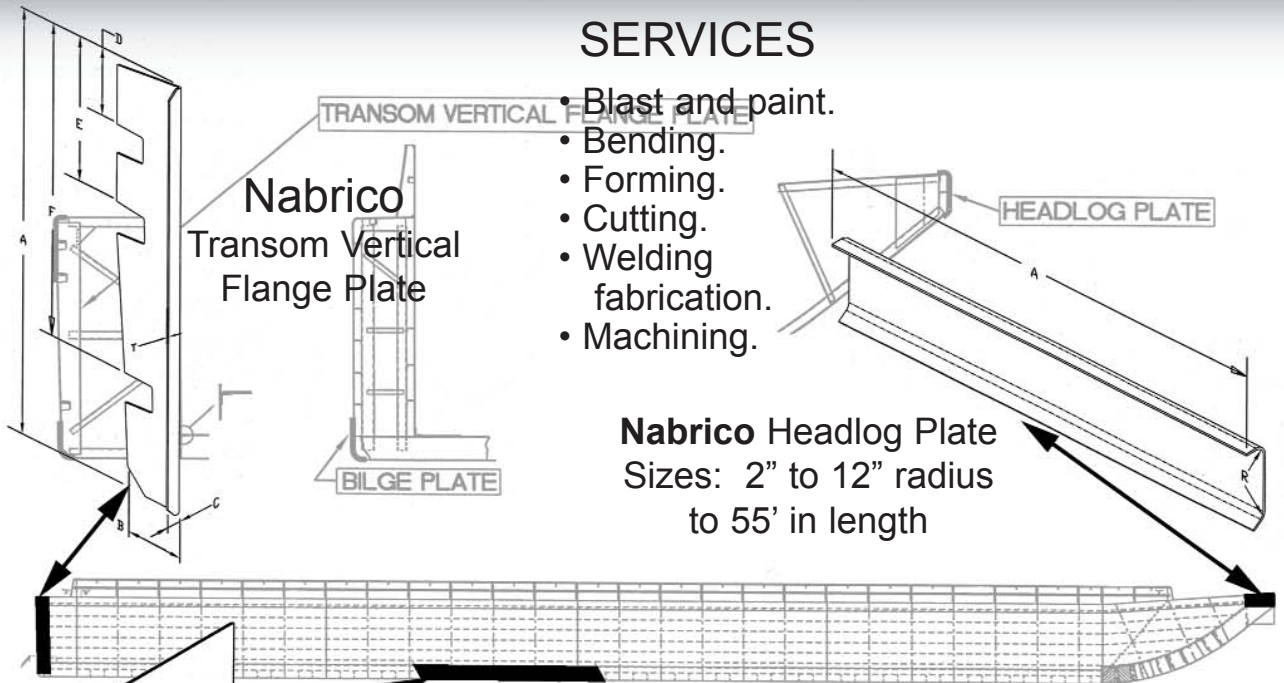


DF-126 HOSE CRANE
 • 2500 Pounds at 16' - 7" radius.

CRANES & STEEL PROCESSING

SERVICES

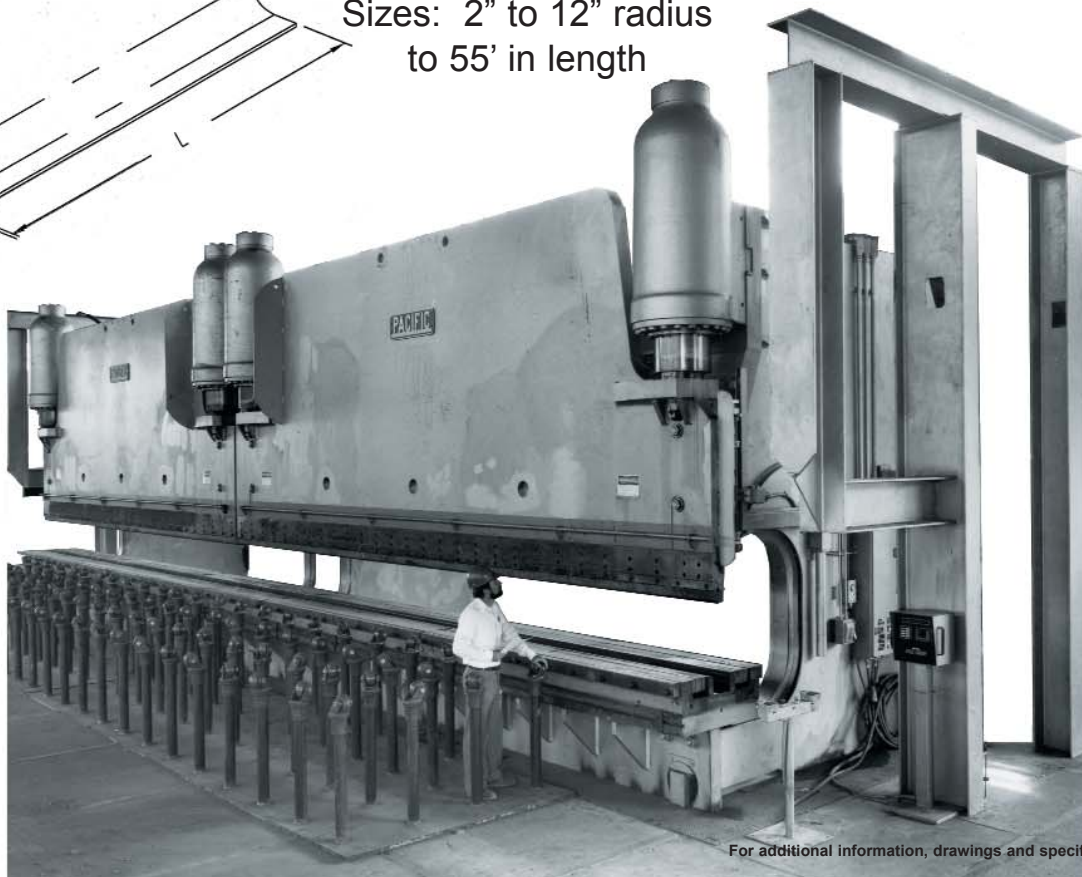
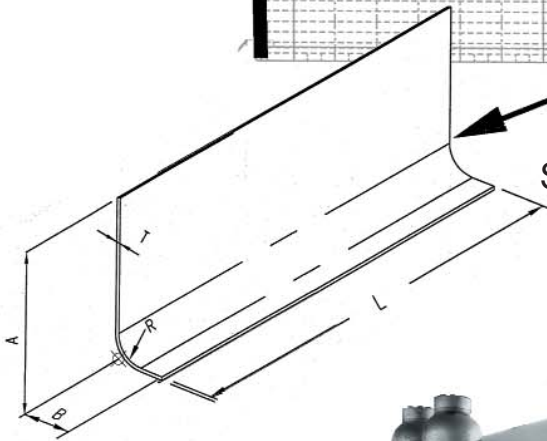
- Blast and paint.
- Bending.
- Forming.
- Cutting.
- Welding fabrication.
- Machining.



Nabrico
Transom Vertical
Flange Plate

Nabrico Headlog Plate
Sizes: 2" to 12" radius
to 55' in length

Nabrico Bilge Plates
Sizes: 2" to 12" radius
to 55' in length



NABRICO



PRODUCT WARRANTY

NABRICO warrants that all NABRICO products shall be free from defects in material and workmanship during the Warranty Period (as hereinafter defined); provided, however, that NABRICO's warranty hereunder shall not apply to any equipment, material or components that is not manufactured by NABRICO, and NABRICO makes no express or implied warranty that any such equipment, material or components are free from manufacturer or supplier defects. To the extent doable, NABRICO agrees to transfer and assign to a Buyer or End User any warranties extended by the manufacturer or supplier of such equipment, material or components. NABRICO shall have no obligation or responsibility to repair or replace any defective NABRICO Product if a notice of defect is not reported in writing to NABRICO within 180 days from the date of shipment of any NABRICO Winch Products and 90 days from the date of shipment of any other NABRICO Products (such 180 day and 90 day periods are hereinafter referred to as "Warranty Period").

In the event Buyer or any End User timely notify NABRICO in writing of any claim of defect covered by this warranty, NABRICO shall correct the nonconforming work by making repairs or replacements, at NABRICO's option and at NABRICO's expense, if NABRICO's examination shall disclose to its satisfaction that all or a portion of the NABRICO Product is defective. However, this warranty is conditional upon compliance by the Buyer or End User with loading, use and handling in accordance with good commercial practices of the trade, and NABRICO shall not be responsible for defects caused by misloading, overheating, improper cleaning, misapplication, physical abuse or from normal wear and tear. This warranty is void where any NABRICO Product has been altered or repaired by anyone other than NABRICO or its authorized agent.

THE WARRANTY AND REMEDIES SET FORTH HEREIN ARE IN SUBSTITUTION OF AND IN LIEU OF ANY AND ALL OTHER WARRANTIES AND REMEDIES EXPRESSED OR IMPLIED, INCLUDING, BUT NOT LIMITED TO, ANY IMPLIED WARRANTIES OF MERCHANTABILITY OR FITNESS FOR A PARTICULAR PURPOSE, WITH RESPECT TO THE CONSTRUCTION, DELIVERY AND SALE OF A NABRICO PRODUCT, AND NABRICO SHALL, FOLLOWING SAID DELIVERY AND SALE, IN NO EVENT BE LIABLE TO BUYER OR ANY END USER FOR THE BREACH OF ANY WARRANTY, GUARANTY, OR REMEDY, EXPRESSED OR IMPLIED, IN FACT OR IN LAW, EXCEPT AS SPECIFICALLY SET FORTH ABOVE. EXCEPT AS PROVIDED HEREIN, NABRICO SHALL AT NO TIME AND IN NO EVENT BE LIABLE TO BUYER OR ANY END USER OR TO ANYONE CLAIMING TO OR THROUGH BUYER OR ANY END USER FOR LOSS OR DAMAGES OF ANY KIND, INCLUDING, BUT NOT LIMITED TO, DIRECT, INDIRECT, SPECIAL, PUNITIVE OR CONSEQUENTIAL DAMAGES OR LOSS OF PROFITS RESULTING FROM ANY CAUSE WHATSOEVER, INCLUDING, BUT NOT LIMITED TO, ANY ACT, ERROR, OMISSION, NEGLIGENCE, STRICT LIABILITY, TORT, PRODUCT LIABILITY, OR OTHERWISE OF NABRICO, ITS EMPLOYEES OR SUBCONTRACTORS.



NABRICO PRODUCTS

**Post Office Box 239
Nashville, Tennessee 37202**

**1250 Gateway Drive
Gallatin, Tennessee 37066**

615-244-2050